



INSTALLATION AND INITIAL CONFIGURATION MANUAL

Xerox WES

Table of contents

Introduction	5
Purpose of the manual	5
Intended audience	5
Symbols used	5
Versions	6
AltaLink and VersaLink models prior configuration	7
Principle	7
Access the configuration interface	7
Change the Administrator password	7
Set the time zone	8
Configure the accounting method	8
On VersaLink B models	8
On VersaLink C models	8
SNMP community configuration	9
On B models	9
On C models	9
Chekc on the WES profile	9
Activate the TLS security	10
On B models	10
On C models	10
Install the card reader	11
On the C models	11
ColorQube prior configuration	12
Phaser devices prior configuration	18
Phaser 3635MFP model configuration	18
Create and configure the WES profile	20
Create the WES profile	20
Configure the WES profile	21
Configure the Properties section	21
Configure the Authentication section	21
Configure the keyboard authentication mode	22
Configure the Accounting section	23
Configure the Quota section	23
Configure the analytical codes	23
Configure the Pull print section	24
Configure the Scan section	25
Configure the Device section	26
Configure the History section	29
Validate the profile	29
Configure the WES on a print queue	30
Access the interface	30
Configure the Validation mode	31
Configure the WES onto the queue	31
Validate the configuration	33
Install the Xerox WES onto the queue	34

Access the interface	34
Configure the Validation mode	34
Install the WES	35

Copyrights

© 2025. Doxense®. All rights reserved.

Watchdoc® and all product names or trademarks mentioned in this document are trademarks of their respective owners.


Reproduction in whole or part, by any means whatsoever is prohibited without prior authorisation. Any electronic copies, either by photocopy, photograph, film or any other means is an offense.

47, avenue de Flandre
59290 Wasquehal - FRANCE
contact@doxense.com

Tel : +33(0)3.62.21.14.00
Fax : +33(0)3.62.21.14.01
www.doxense.com

Introduction

Purpose of the manual

This manual describes the procedure for installing WES v3 (Watchdoc Embedded Solution) on **xerox**  devices.

Intended audience

This manual is intended to be used by technicians responsible for installing the WES on Watchdoc v6.x. Such technicians must have information on the print server, the Watchdoc hosting server, as well as the properties of the device.

Symbols used

The terms followed by an asterisk * are defined in the glossary.



Information: reports important information required to fine tune the installation or configuration of the solution or information that may be useful for a better understanding or knowledge of a notion or a function of the tool, or provides a specific case of use of this tool. Contact Doxense®

Doxense's technical assistance service is reserved for certified, technical partners and can be contacted via [Connect](#), customer portal dedicated to partners.



For all other questions, please contact your Doxense® consultant or send us an email at contact@doxense.com

Versions

Date	Description
06/2025	Update of the WES Profile configuration's device's section: add of the End-point parameter
10/2024	Update of the document formatting
07/2022	Update of the WES V3 installation procedure
03/2020	Update of the Quota feature and add of a troubleshooting article
01/2018	Update of the available devices list.
11/2017	Addition of a note about the Xerox 7855 model and Troubleshooting
10/2017	Update of the Install chapter for the C70 devices models.
09/2017	Rereading and corrections. Translation of the device configuration.
09/2017	Addition of the WES V3 description and configuration
09/2017	Rereading and corrections
05/2017	Addition of the Authentication Method and Print Job Release Mode parts.
03/2017	Update of the screenshot.
02/2017	New graphical version, adding device prerequisites, adding Organisational Requirements
09/2016	First version.

AltaLink and VersaLink models prior configuration

Principle

Before installing the Xerox WES on an AltaLink or VersaLink model, the following settings must be configured on the printing device:

- administrator password
- time zone
- accounting method
- SNMP communities
- TLS security
- badge reader installation (if authentication is badge-based).

Access the configuration interface

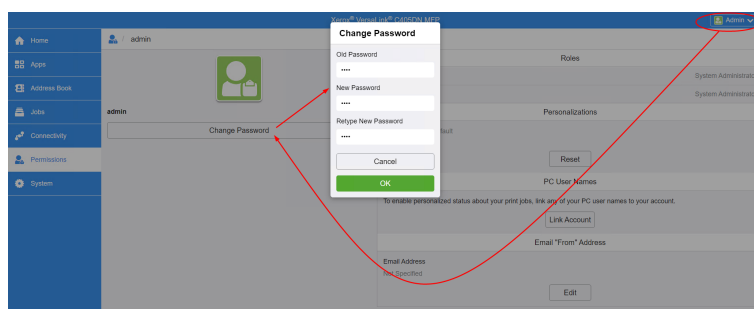
These configurations are defined from the device administration web interface. To access them:

1. Enter the device IP in a web browser.
2. authenticate as the device administrator.

Change the Administrator password

To access the print device administration interface, you need to change the default administrator password:

1. once authenticated, in the top right-hand banner, click **Admin> My Profile**:
2. in the **My Profile** interface displayed, click on the **Change password** button ;
3. in the dialogue box, enter the old password and the new one ;
4. then click **OK** to confirm:



→ The interface will reload and you will be logged out: log in with the new password to check that it is valid.

Set the time zone

1. from the device administration web interface, click on **System > Date & Time or Properties > General Settings > Date & Time** ;
2. In the **Date and Time** interface, adjust the settings to suit your needs;
3. Select the date format and the time zone corresponding to your location;
4. click **OK** to confirm your settings:

Configure the accounting method

On VersaLink B models

To enable Watchdoc job accounting, XSA (Xerox Secure Access - Unified ID System) must be enabled and network accounting must be enabled on the device:

1. From the device administration web interface, go to the **Properties > Connection / Access Permissions / Accounting > Connection Methods or Permissions > Accounting Method** tab.
2. In the **Change Connection Methods** interface, for the **Connect from control panel** setting, select the **Xerox Secure Access** method:
3. then click on **Connection / Access authorisation / Accounting > Compatibility** methods;
4. in the **Modify method** interface, select the **Network accounting** method:

On VersaLink C models

1. From the device administration web interface, click **Authorisations > Accounting methods**;
2. In the **Accounting methods** interface, enable **Network accounting**;
3. then click **OK** to confirm the settings.

SNMP community configuration

On B models

1. From the device administration web interface, go to the **Properties > Connectivity > Setup** tab.
2. in the **SNMP** properties section, check the box **Activate the SNMP V1/V2c protocol** ;
3. click on the **Edit SNMP v1/v2c properties** button;
4. in the **Community Names** fields, check the following values:
 - **GET Community Names** : public
 - **SET Community Name**: private

xerox VersaLink® B415 Multifunction Printer

The screenshot shows the 'Edit SNMP v1/v2c Properties' page in the Watchdoc interface. The 'Community Names' section contains two text input fields: 'GET Community Name' with the value 'public' and 'SET Community Name' with the value 'private'. Below these is a 'Confirm SET Community Name' section with a text input field containing 'private', which is highlighted by a red rectangle. At the bottom of this section is a checked checkbox labeled 'Select to save new 'SET Community Name''.

On C models

1. From the device administration web interface, click on **Connectivity > SNMP** ;
2. in the **SNMP** properties section, click on the **SNMP V1/V2c** line;
3. in the **SNMPv1/v2** interface, in the **Community names** section, check the following values:
 - Read-only community name: public
 - Read/Write community name: private
4. click on **OK** to validate.

Check on the WES profile

Once you have configured the WES on the queue in the Watchdoc administration interface, you can check that the configuration matches: on the print queue with which the WES is associated:

1. From the Watchdoc administration interface **Main menu**, click **Printing Queues... > Xerox > Properties > Monitoring section > Edit configuration**);
2. in the **Community** section, check that the values entered for **Read community** and **write community** are the same as those of the device:
3. If necessary, modify them so that they are identical:

Monitoring

SNMP ☒ Enable device network monitoring (recommended)

IP Address

Community

SNMP read community

SNMP write community

Activate the TLS security

On B models

1. From the device administration web interface, go to the **Properties > Security > TLS** tab;
2. in the **TLS** section, select **TLS 1.1 and TLS 1.2**:

xerox VersaLink® B415 Multifunction Printer

Home Jobs Print Scan Address Book **Properties** Support

Search

Security Dashboard
Fleet Orchestrator
Adaptive Learning
Configuration Overview
Description
Configuration Report
General Setup
Connectivity
Login/ Permissions/ Accounting
Apps
Security
Password Policies
Installation Policies
Secure Print
Authentication (Login)
FIPS
TLS
Logs
Certificates
IP Filtering
IPsec
Timeout & Resume
USB Port Management
Job Data Removal
PostScript® Passwords
Personalized Information
Software Verification Test
Configuration Watchdog

TLS (Transport Layer Security)

TLS encrypts device communication over a network to provide privacy and integrity.

TLS Version for Secure Device Communication over a Network

☐ TLS 1.2 only (recommended)
☒ **TLS 1.1 and TLS 1.2**
☐ TLS 1.0, TLS 1.1 and TLS 1.2
☐ Include TLS 1.3

Older TLS Versions Are Less Secure

Older TLS versions are less secure, but available for older products.

TLS Hash Algorithm

☐ SHA-256 and above (recommended)
☒ **SHA-1, SHA-256 and above**

SHA-256 and Above Is Not Available

'SHA-256 and above' is not available when either TLS 1.0 or TLS 1.1 is selected.

On C models

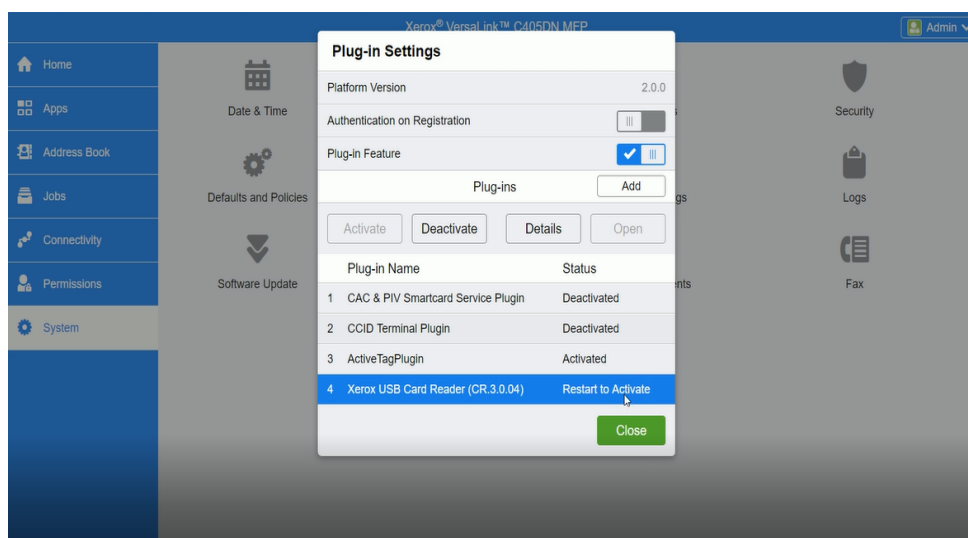
1. From the device administration web interface, click on **System > Security**
2. in the **Network Security** section, click on **SSL/TLS Settings** ;
3. in the **SSL/TLS Settings** interface, tick
 4. TLS 1.1
 4. TLS 1.2
 - Communication HTTP-SSL/TLS.
5. Click on **OK** to validate.

Install the card reader

On the C models

To enable C405 peripherals to read badges, a specific plug-in must be installed and downloaded from the Xerox website.

1. From the Xerox website, download the compressed file **VersaLink_Card_Reader_Plugins.7.zip** ;
2. unzip the file in a temporary folder on the print server;
3. From the device administration interface, click on **System** and then on **Plug-in Settings**;
4. in the **Plug-in settings** box, activate the **Plug-in functions** function ;
5. click on **Add** ;
6. click **Close** to close the box:
7. in the **Add a plug-in** box, click **Select**, then select the **Generic_CardReader.jar** executable contained in the archive unzipped at the start of installation;
8. click on **Restart now**:
→ a message informs you that the device is unavailable during the reboot:



9. The device is rebooted.
Log out of the device administration interface and create / configure the WES (cf. Create / configure the WES).

ColorQube prior configuration

Before installing the WES, check the following parameters on the device:

- the existence of an SSL certificate;
- the HTTPS protocol activation;
- the verification of SNMP communities;
- the bidirectionality verification.

SSL certificate

1. Access to the device web administration interface web;
2. on **Properties>Connectivity > Protocols**, click on **HTTP**;
3. in the **Configuration > Secured HTTPS** section, choose **Activated**;
4. click on **Apply** button to validate the configuration.

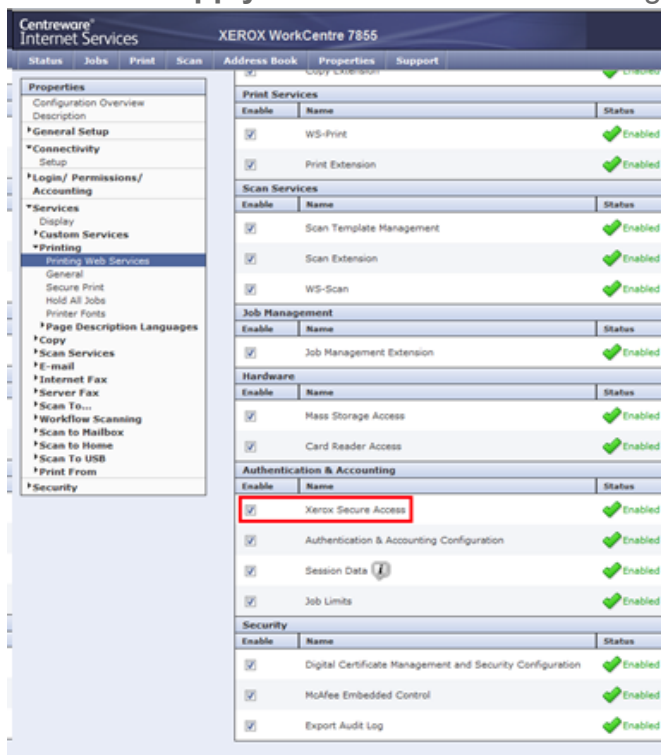
If the checkbox is grayed and inactive, it is necessary to create a certificate. For this creation, refer to the manufacturer's administration manual.

→ the device administration web site restarts and the browser is redirected to the https device site.

Xerox Secure Acces (XSA) web service

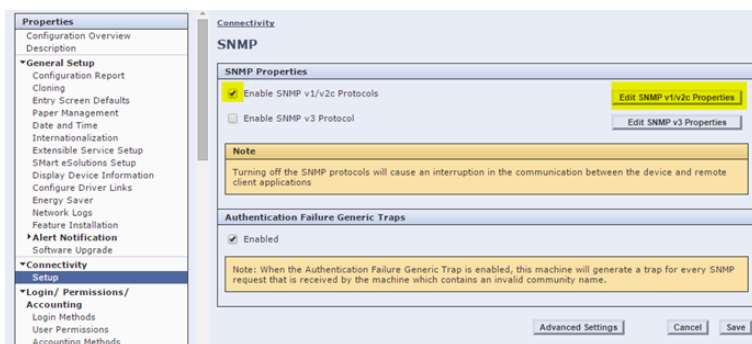
1. From the device administration web interface, go to the **Properties>Services> Printing** tab;
2. click **Printing web Services**;
3. in the **Authentication and Accounting** section, verify that the **Xerox Secure Access** box is ticked;
if it's not the case, tick the box;

- click on the **Apply** button to validate the settings:



SNMP Community

- From the device administration web interface, go to the **Property > Connectivity > Installation** tab;
- in the **SNMP Properties** section, tick the **Enable SNMP V1/V2c Protocols** box;
- click on the **Edit the SNMP v1/v2c Properties** button:



- In the **Community Names** section, verify the **GET Community Name** and **SET Community Name**:

xerox VersaLink® B415 Multifunction Printer

Home Jobs Print Scan Address Book **Properties** Support

Search

Security Dashboard
Fleet Orchestrator
Adaptive Learning
Configuration Overview
Description
Configuration Report
General Setup
Connectivity
Setup
Login/ Permissions/ Accounting
Apps
Security
Configuration Watchdog

/ SNMP

Edit SNMP v1/v2c Properties

Community Names

GET Community Name
public

SET Community Name
private

Confirm SET Community Name
private

☒ Select to save new 'SET Community Name'

5. click on **Save** to validate the settings.
6. In Watchdoc, edit the printing queue associated to the WES (**Main Menu** > **Printing queue** > select a **XeroxQueue** > **Properties** > **Monitoring** section);
7. in the **Community** section, verify that the **SNMP read community** and the **SNMP write community** values are the same as those of the device. If necessary, change them to be the same:

Monitoring

SNMP ☒ Enable device network monitoring (recommended)

IP Address 10.10.27.176

Community

public
SNMP read community

private
SNMP write community

Status ☒ Monitor the status of the device (recommended)

☒ Monitor the level of consumables

☒ Monitor the levels of the paper trays

sec (polling)

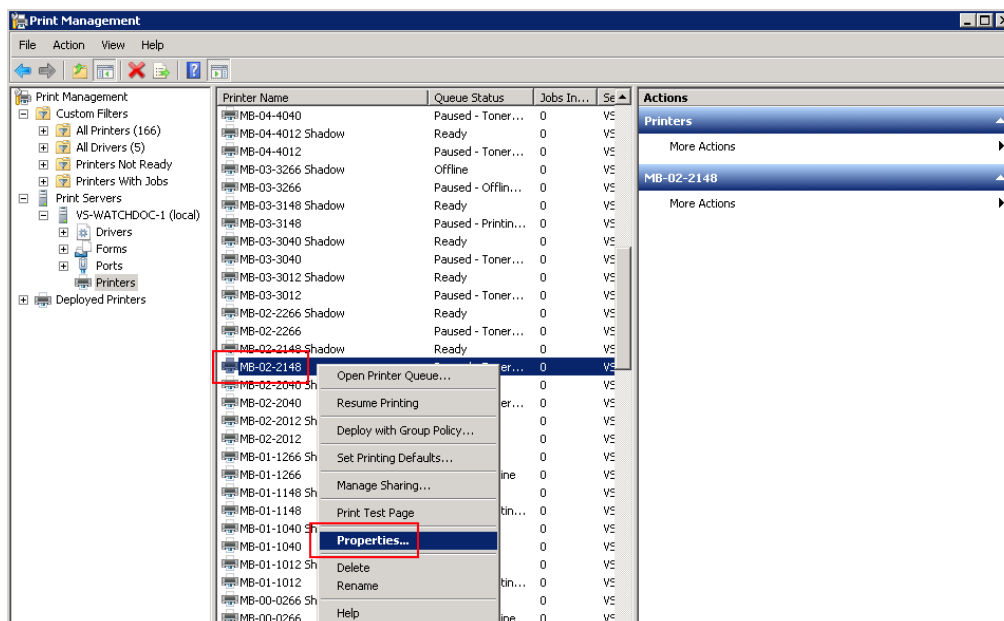
ms (ping timeout)

Diag. ☐ Enable logging of all SNMP requests to the disk

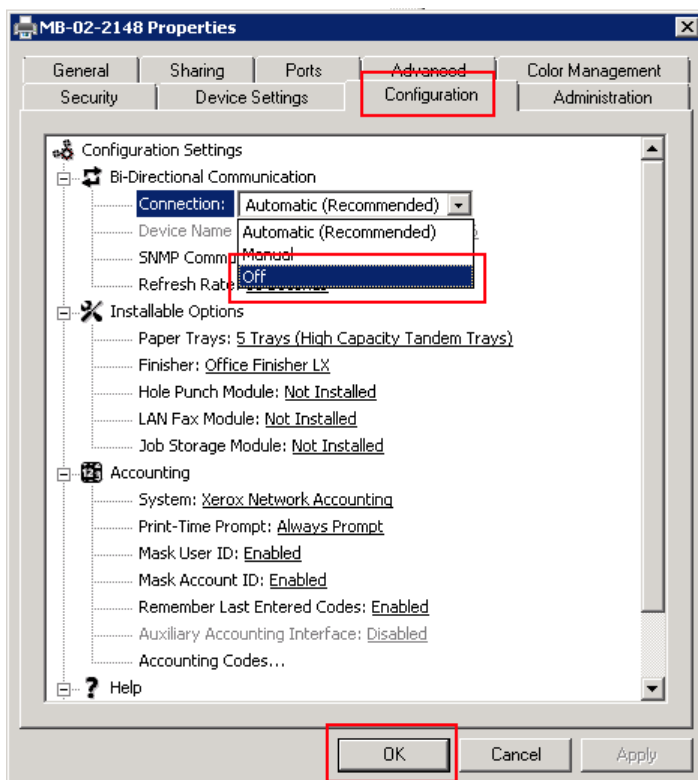
Check the bidirectionality

By default, "bidirectionality" mode is enabled on the print server. As a result, the driver's accounting mode is synchronized with that of the device. For Watchdoc to work properly, it is necessary to disable this mode on the driver and

1. to deactivate the bidirectionality onto the driver, go to the **printing devices manager** on the server:
2. select the concerned driver, then right-click to go to **Properties**;
3. on **Configuration** tab, click on **Configuration Settings** > **Bi-Directional Communication**;

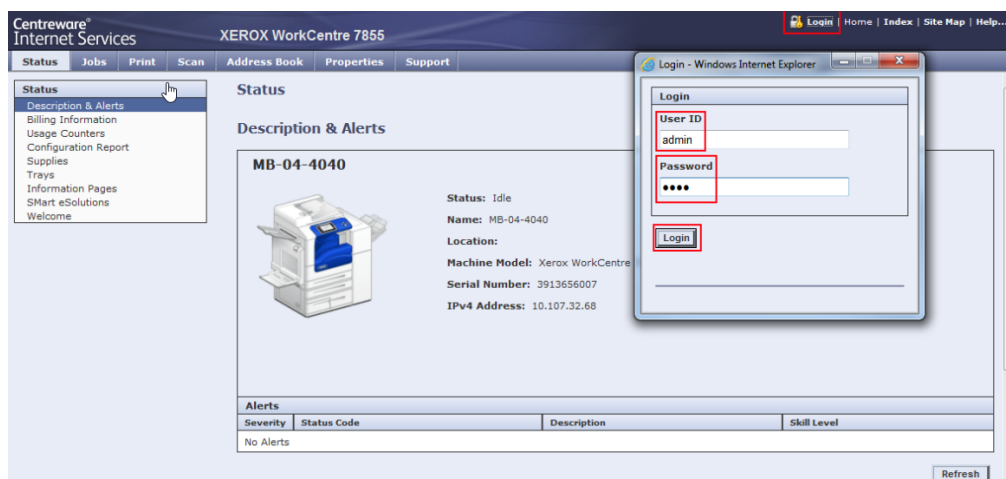


4. For the setting **Bi-Directional Communication > Connection**, select the value **Off**:

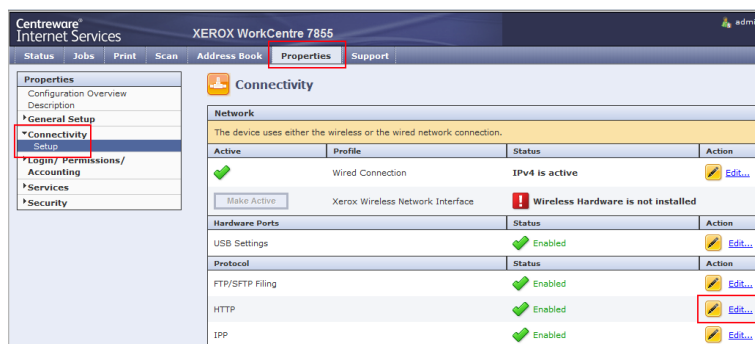


Deactivate bidirectionality on the device:

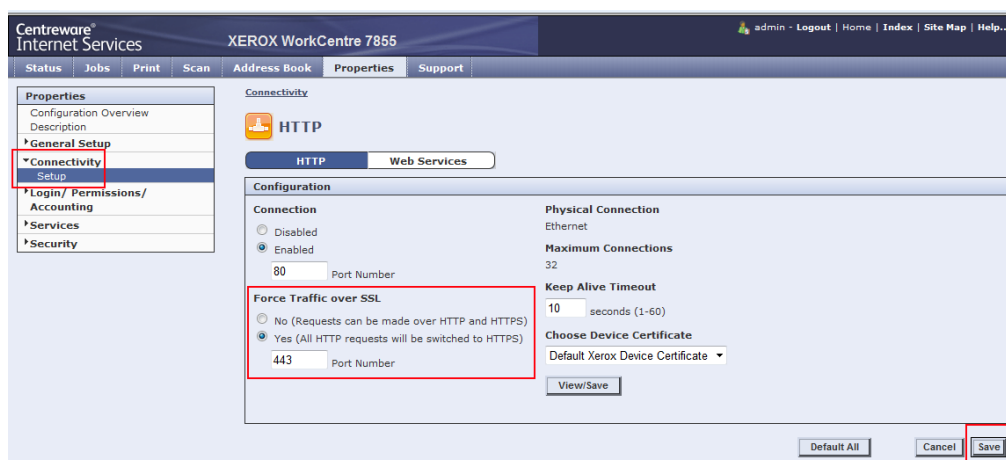
1. log on to the device's web administration interface as administrator;



2. In order to secure exchanges between the device and Watchdoc, it's necessary to get the HTTPS protocol instead of the HTTP protocol applied by default. To modify this protocol, click on the **Properties > Connectivity > Setup** tab;
3. in the **Connectivity** interface, **Protocol** section, click on the **HTTP setting Edit** button:



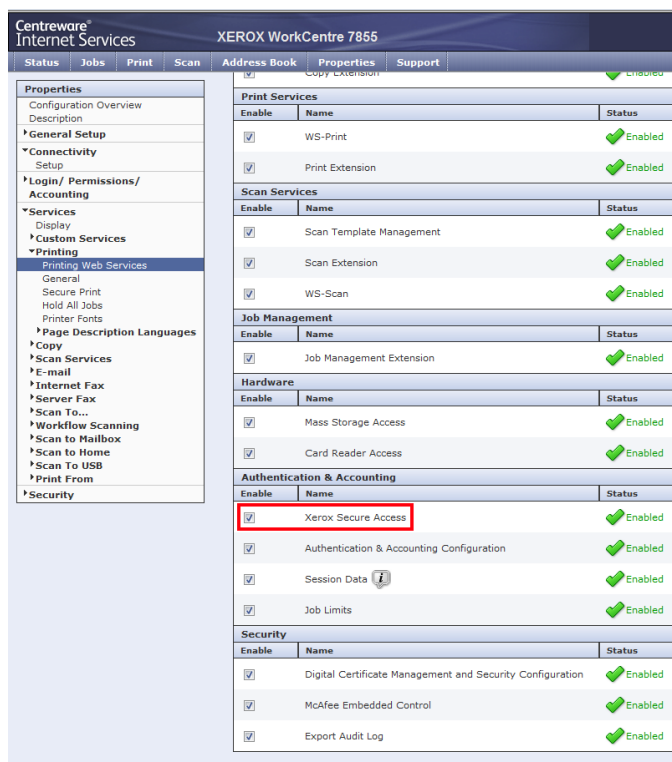
4. in the **HTTP** interface, for the **Force Traffic over SSL** setting, select **Yes** and keep the **443** default port;
5. click on **Save** to validate:





After this modification, the administration web page becomes temporarily unavailable until the device's HTTP controller restarts

6. in the **Properties** section, click on the **Services > Printing > Printing Web services** menu entry;
7. in the **Authentication & Accounting** section, tick **Xerox Secure Access**,



8. click the **Save** button to validate;
9. Log out of the device administration interface and Create/configure the WES.

Phaser devices prior configuration

Phaser 3635MFP model configuration

This model do not have a web service allowing automatic configuration, it is necessary to configure it manually.

1. from the device web administration interface, go to the **Properties > Connectivity > Protocoles > HTTP** tab;
2. In the **HTTP** section, select **Activate SSL** in **HTTP security** mode:



If Enable SSL does not appear in the security mode list, the device does not have an SSL certificate. It is therefore necessary to create one, as indicated in the device administration manual.

Activate the personalized services

1. From the device administration web interface, go to the **Properties > Services > Mail settings > Custom services** tab
2. in the **Custom Services** section, tick the **Enabled** box
3. click the **Apply** button to confirm the settings.

Configure the Phaser 3635MFP model Network Accounting

Provided as a card to insert in the device, this kit is a paid option for this model. Its activation is performed from the device screen using a document provided with the kit by the manufacturer.

To verify if the Network Accounting kit is activated:

1. from the device administration web site go to **Properties > General Configuration > Configuration** tab;
2. in the **Accounting Configuration** section, verify that the **authentication** mode is activated.

Install the card reader

Here is an extract of the Xerox installation manual:

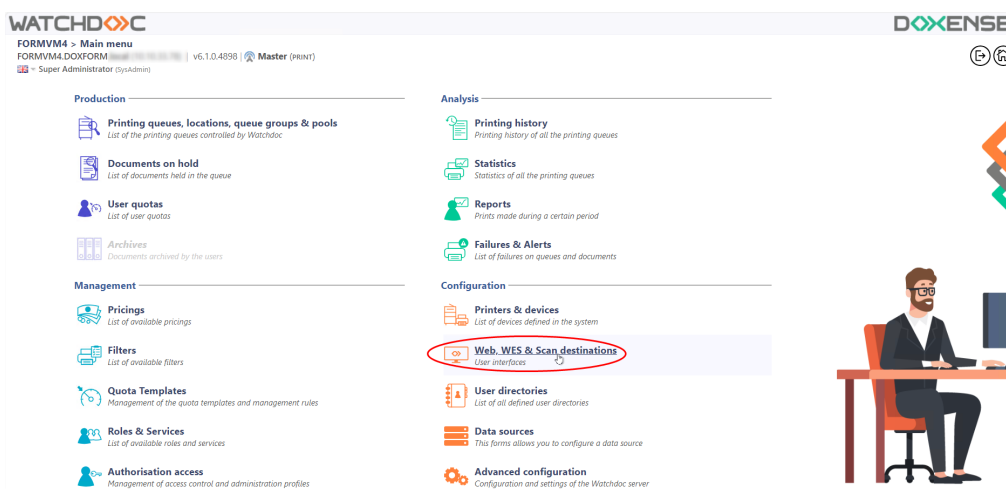
1. connect to the device as administrator;
2. click on the device **Status** button;
3. Select the **Tools> User interface > General > FSO** tab;
4. Select **SFO 35**, then click on the **Activate** button;
5. **SFO 35** must indicate **YES**.
6. **Save** the settings.

Create and configure the WES profile

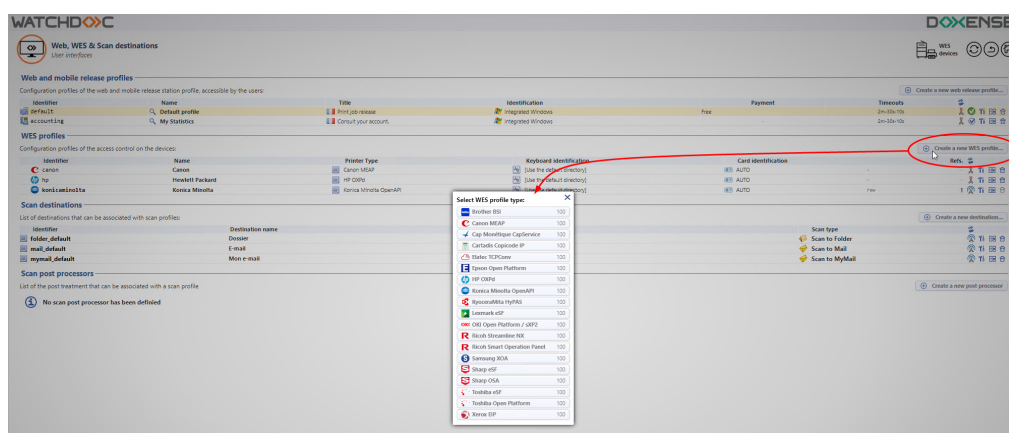
Create the WES profile

On a clean Watchdoc installation, a first WES profile is automatically created with default parameters at the end of the wizard procedure, but you can, at any time, edit existing profiles to modify them or create a new profile.

1. From the **Main menu** in the administration interface;
2. in the **Configuration** section, click on **Web, WES & Scan destinations**:



3. in the **Web, WES & Scan Destinations - Client Interface Management** interface, click on **Create a new WES profile**;
4. in the list, select the profile you want to create:



→ you will access the **Create a WES profile** form, which contains a number of sections in which you can configure your WES.

Configure the WES profile

Configure the Properties section

Use this section to state the main WES properties:

- **Identifier:** Enter the single identifier for the WES profile. It can comprise letters, numbers and the '_' character with a maximum of 64 characters. This identifier is only displayed in the administration interfaces.
- **Name:** enter the WES profile name. This explicit name is only displayed in the administration interfaces.
- **Global :** in the case of a master/slave configuration, tick this box to replicate this profile on the slave servers.
- **Language:** Select the WES display language configured from the list. If you select **Automatic detection**, the WES adopts the language it finds by default in the device configuration.
- **Version:** select the version of WES. For v3, you can customise the interface by choosing the colour of the buttons and images to match your graphic identity:
 - **Colour:** enter the Hexadecimal color value corresponding to the WES button's colour. By default, the buttons are Watchdoc® orange customized (#FF9015). Once the value is entered, the colour is displayed in the field.
 - **Images:** if you want to customize the WES images, enter the folder path in which are recorded images you want to display instead of the default images (stored in C:\Program Files\Doxense\Watchdoc\Images\Embedded\Doxense\[Manufacturer_Name] by default).



Configure a WES profile - Xerox EIP

This form allows you to configure a WES configuration profile

Properties	
Identifier	wzdxerox
Name	WES Xerox (WIZARD)
Global	<input checked="" type="checkbox"/> Replicate this profile on all servers
Usage	Device locked
Version	v2 Embedded application version
Language	Automatic detection
Colour	Colour of the buttons on the screen, in web format (ex: '#FF9015'): #FF9015 R=255, G=144, B=21
Images	Path to the folder containing custom images: Leave blank to use default images



For more information on the customization procedure, see the section **Customize the WES buttons and images**.

Configure the Authentication section

- **Mode:** from the list, select the authentication mode you wish to activate:
 - **Managed by Watchdoc:** choose this mode if you want the WES to manage authentication and rights on the device. By default, this mode is

- activated on all models supporting the Elatec badge reader
- **Managed by an XSA kit:** choose this mode if authentication is managed by a third-party application supplied by Xerox. In this case, the XSA web service must have been activated (see prior configuration) and Watchdoc is then only used for print on demand and accounting.
 - **Rights management:** tick the boxes to authorise authenticated users to access functions on the device:
 - Copy ;
 - Email scan;
 - Other scans ;
 - Print

Authentication

Mode	Identification is managed by Watchdoc ▼
Rights management	<input checked="" type="checkbox"/> Copy <input checked="" type="checkbox"/> Email scan <input checked="" type="checkbox"/> Others scans <input type="checkbox"/> Print



Rights management is incompatible with ScanToMail on WorkCenter 7845 models.

Clear the rights checkboxes when configuring the WES profile for WorkCenter 7845 models.

Configure the keyboard authentication mode

- **Keyboard authentication:**
 - **Enable:** tick the box (at the section level) to enable user authentication from a physical keyboard or the touch screen one, then set out how this authentication works:
 - **Directory:** From the list, select the directory to query during keyboard authentication. If no directory is set, Watchdoc will query the default directory. Then specify how users are to authenticate themselves:
 - **Mode:** choose one of the authentication mode
 - **Login and password:** users will use their LDAP credentials. We do not recommend using this mode.
 - **Login (PUK Code):** the PUK code is automatically generated by Watchdoc according to the parameters defined in the directory and communicated to the user on the "My account" page.
 - **Login and PIN Code:** consisting of 4 or 5 digits, the user PIN code (1234, for example) is registered as an LDAP attribute or in a CSV file. It is associated to the user login (available with the Watchdoc 5.1 version).

- **Login and print password:** users will use their LDAP login and a code a code specific to the printing function

Keyboard authentication

Enable	<input checked="" type="checkbox"/>
Directory	META / META <small>Domain used to map the PIN Code to the user account</small>
Mode	Login (PUK code)



We do not recommend authentication by login and password. Nevertheless, if you opt for this mode, make sure that the device's screen and keyboard are configured in the user's language and that they allow all characters to be entered, even diacritics (accents, cedilla, tilde).

Configure the Accounting section

- **Device > Uses the prints accounting information from the device :** tick this box if you want accounting to be supported by the device instead of the Watchdoc parser. This only applies to print jobs. Results are more reliable especially when the job is not fully printed (canceled).

Accounting

Device	<input checked="" type="checkbox"/> Uses the prints accounting information from the device instead of from the Watchdoc parsers.
--------	--

Configure the Quota section

- **Enable:** tick the box to enable the WES to manage print quotas.

Quota

Enable	<input checked="" type="checkbox"/>
--------	-------------------------------------



If you tick the box, complete the configuration:

- by adding at least one quota;
- by applying the VMS and rates to the print queues associated with the WES (see [Configuring quotas article](#)).

Configure the analytical codes

In this section, you give users the ability to enter code to assign a code to print-jobs so that their cost can be broken down.


When the option is checked, the solution installed on the device offers the user the option of entering or selecting a billing code for the documents made on the device and for the prints released.

- **Activate option:** tick the section box to activate the feature from the WES. In this case, the user must enter or select from a list a billing code to print documents on the device

- **Data source:** : in the list, select the source corresponding to the billing codes if there are several. By default, the data source is DS_BILLINGCODES.
- **Deny access if the user does not have the billing code in the source:** Tick the box to refuse the printing right to users who haven't billing codes.
- **Display mode:** in the list, select the value that must be displayed to the user : only the service code, only the service label or both code and label;
- **Display parents:** tick the box if you want to display the codes of the parents of the entered code:
- **Search:**
 - **search scope:** when the user does not know the code to impute, he can search on the field "Code", on the field "Label" or on both fields simultaneously.
 - **search mode:** specify whether the search is for the beginning of the value or part of the value.

Analytical codes

Enable ☐

Data source  Select the data source of the analytical codes:

☐ Deny access if the user does not have the analytical code selected.

Display mode

☒ Display codes parents if they exist

Search

Search scope

Search mode

Configure the Pull print section

In this section, you can change options about the Watchdoc release application: sort order of the document, tariff information and optional pages.

You can bypass this application by enabling the automatic release mode. When the user

is authenticated on the device, all its documents are released.

- **Menu icon:** to access the interface, the user clicks on the Watchdoc logo. By default, this logo is called My Prints .
 - **Label of the application:** enter the name you wish to associate with the logo instead of the default name (instead of Watchdoc by default) ;
 - **Description of the icon:** enter a description giving information about the nature of the application (this information is displayed on the administration website).
- **Sort Order:** Set the documents order on the device screen:
 - **Reverse chronological:** More recent documents will top the list ;
 - **Chronological:** Older documents will top the list.
- **Options:**
 - **Release all documents at login:** When the user logs on by swiping his card or typing his PIN code, Watchdoc releases all user documents on the device where he logs on
 - **All documents are checked by default:** Check the box to ensure that all print-jobs are automatically ticked in the list of waiting print-jobs when the user logs in.

- **Enable Page Zoom:** Select this checkbox to enable the user to zoom in on jobs waiting to be printed (PCL 6 driver required);
- **Enable spool edition:** tick this box to enable the spool transformation function;
- **Display options: monetary information presented to the user** Select which information will be displayed to the users (none, cost, price);
- **Force the monetary display to 2 decimal digits:** Tick the box to limit the number of decimal digits displayed to the user in the tariff information.
- **Use a custom logo:** (WES V2 only) Tick the box to custom the WES by applying your organisation logo. In this case, the logo must be recorded in the Watchdoc server dedicated folder (C:\Program Files\Doxense\Watchdoc\Images\Embedded\Logo.png).
- **Display print policy warning messages:** tick this box if you wish to inform users of the printing policy that has been implemented, which could change their initial choices.

Configure the Scan section

This section is used to configure the WEScan function. It can only be activated with a WES V3.

- **Menu icon:** to access the interface, the user clicks on the Watchdoc logo. By default, this logo is called WEScan.
 - **Label of the application:** enter the name you wish to associate with the logo instead of the default name (instead of WEScan by default) ;
 - **Description of the icon:** enter a description giving information about the nature of the application (this information is displayed on the administration website).
- **Display settings- Use the last values chosen by users:** allows the user to be offered the most used scanning profiles (predefined settings), which offers a time saving when scanning uses are often the same. Then specify whether the classification should be done using:
 - the **type of profile:** (the most frequently chosen profile);
 - the **date of use** (profile chosen the last time it was used).
- **Open default profile bar:** provides an interface in which the user can choose between all the scanning parameters, which is useful when the scanning uses are very varied. Then specify whether you want to display the settings or the (pre-set) profiles.
 - the scan **settings type** ;
 - the scan **profile type** (pre-configured).
- **Allow users to switch display modes:** tick this box to allow the user to customize their interface by choosing their preferred display mode.
- **Scan profiles:** for each profile listed, you can check:
 - **activation:** to make it active in the embedded interface;
 - **inheritance:** to allow the user to create a new profile inheriting the parameters of the existing profile. The user will then be free to modify one or more parameters of the original profile;
 - **destinations** : the **destination** is the place where the scanned document is sent. For each profile, you can activate, deactivate and define one or

more destinations by default:

- **E-mail:** Send the scan to the e-mail of a recipient entered in the interface;
- **My e-mail:** send the scan to the user's email (always known if the user has an AD account);
- **Folder:** send the scan to a predefined folder in the workspace accessible to the user.

☒ **Scan**

Display settings

☒ Use the last values chosen by users

Default profiles bar sorting order:

☒ Open default profiles bar by default

Default display mode:

☐ Allow users to switch display modes

Scan Profiles	Name	Activation	Inheritance ⓘ	
	Colour standard	<input checked="" type="checkbox"/> Enabled	<input checked="" type="checkbox"/> Inheritance enabled	Destinations ▼
	Black and white low resolution	<input checked="" type="checkbox"/> Enabled	<input checked="" type="checkbox"/> Inheritance enabled	Destinations ▼

Configure the Device section

This section is used to define the connection mode between the server and the print devices.

- **Fault tolerance:** tick this box to enable fault tolerance based on load-balancing. If you enable this function, you will need to configure interserver printing (see [Configuring interserver printing](#)).
- **Server Address type:** The device needs to contact the Watchdoc server when the user tries to connect or wants to release his documents. You can specify the Watchdoc server address in three different ways: IP Address, DNS Address and Custom Address ;




If the server has several IP addresses, Watchdoc uses the first one it finds. If the device is on another VLAN, the WES may not be able to contact Watchdoc. In this case, create a WES profile per IP address and choose Address opposite, specifying an IP for each profile. When associating the WES with the print queue, select the WES that corresponds to the device's VLAN.

- **Secure endpoint:** if you select the parameter Use SSL to display Web Pages on the device, since v. 6.1.0.5262 you can specify whether you wish to use:
 - the **custom access point** (previously configured in the DSP section (see [Configuring the Web Server](#));
 - the **Watchdoc server's default** port 5753 ;
- **Jobs:** specify, in minutes, the time during which print jobs are retained in the event of suspension.
- **Network - Port SOAP:** if the device connection settings are not the default settings, specify the device access port number.
- **Use SSL to display Web Pages on the device:** tick this box to secure web pages displayed on the device screen;
- **Use SSL for SOAP requests:** check this box to secure SOAP requests used to configure the device ;


- **Lockout:** from the list, select the appearance of the device screen when it is locked :
 - **Full:** the screen is completely locked, the application icons are not visible and no application is freely accessible, the user being asked to log in first.



- **Services:** all applications are locked, but their icons are visible.
- **Sélectif:** you can select which applications will be locked (ticked box) and which will be freely accessible (unticked box):
 - **Copy:** gives access to the function of copy;
 - **ID Card Copy:** gives access to the function of ID card copy that allows the user to photocopy both sides of an ID card or small document onto a single sheet of paper.
 - **Scan to email:** gives access to the function of scan and send to an e-mail address;
 - **Scan to folder:** gives access to the function of scan to a folder;
 - **Scan to USB:** gives access to the function of scan and send to a USB key;
 - **Scan to home:** gives access to the function of scan and send to a personal folder;
 - **Network fax:** gives access to the function of network fax;
 - **Internet fax:** gives access to the function of internet fax;
 - **Fax:** gives access to the function of fax;
 - **Save for reprint:** gives access to the function for saving print jobs in the device's internal memory ;
 - **Reprint saved jobs:** gives access to the function that allows to print jobs stored in the device's internal memory ;
 - **Media print:** gives access to the function that allows to print from mobile device;
 - **Scan to:** gives access to the function that offers several ways of scanning and storing a document (to e-mail, to USB media, to a predefined folder, to a network folder);
 - **Print from:** gives access to the function that allows to print from a device;
 - **Device:** gives access to the function that gives information about the device (serial number and model, shop status, invoicing and consumables).

 These display options are not available on all models Fuji models must be configured manually. Some devices (e.g. 71XX, 53XX) only support Full mode. On WorkCenter 7845 models, locking one or more device functions is incompatible with the scanning function.

- **Device security:** tick the box if you are using the default identifiers or specify the device administrator account (login) and password that Watchdoc needs to communicate with the device for certain operations (automatic installation, SOAP requests, etc.).
- **Security protocols:** In the list, select the protocol activated between the WES and the Watchdoc kernel:
 - **Use default credentials:** WES automatically adapts to the data communicated: it uses **SSL** for sensitive data (PUK code, login/mdp, etc.) and not SSL for non-sensitive data;
 - **SSL:** WES always uses SSL to communicate with the server.
 - **TLS:** tick one of the TLS boxes to secure exchanges between the server and the device (depending on the TLS version chosen).

 Activating SSL may cause slowness or alerts in the event of unrecognised certificates. When SSL is deactivated, it is recommended not to use authentication or badge enrolment by account and password.

Device

Fault tolerance ☐ Enable fault tolerance
If you enable this feature the WES will need the interserver database to work

Server address Server IP Address

Jobs 4320 Retention period for held jobs in minutes

Network You can override the network settings if the device is not configured by default

SOAP Port Leave blank for default value, **443** for SSL, **80** for non-SSL

☒ Use SSL to display Web Pages on the device

☒ Use SSL for SOAP requests for the device configuration

Lockout full

☒ Copy

☒ ID Card Copy

☒ Scan to email

☒ Scan to folder

☒ Scan to USB

☒ Scan to home

☒ Network Fax

☒ Internet Fax

☒ Fax

☒ Save for reprint

☒ Reprint saved job

☒ Media Print

☒ Scan To

☒ Print From

☒ Device

Device security ☐ Use default credentials

Login

Password

Security protocols ☒ Use WEB server values

☐ SSL v3.0

☒ TLS v1.0

☒ TLS v1.1

☒ TLS v1.2

☒ TLS v1.3

Configure the History section

This section displays information on the configured WES and on modifications made to it :

History

GUID	bf482449-1f29-4117-89a6-046dcfc298bc
Version	Edited 3 time(s), last modified 02/09/2019 at 17h36
Owner	This entry is managed by this server.

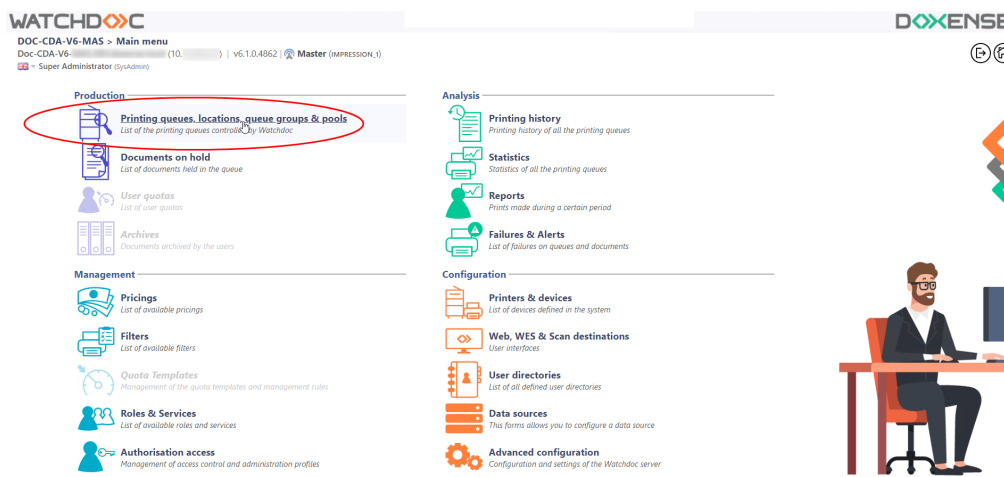
Validate the profile


1. Click on the button to validate the WES profile configuration.
→ Once validated, the WES profile can be applied to a print queue.

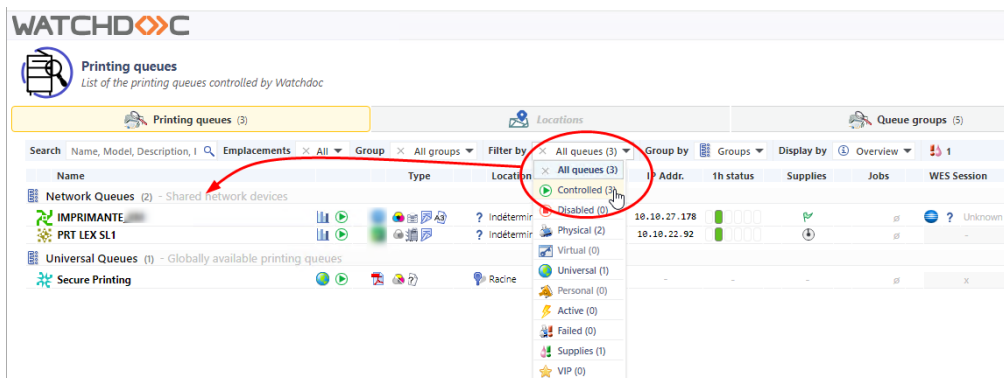
Configure the WES on a print queue

Access the interface

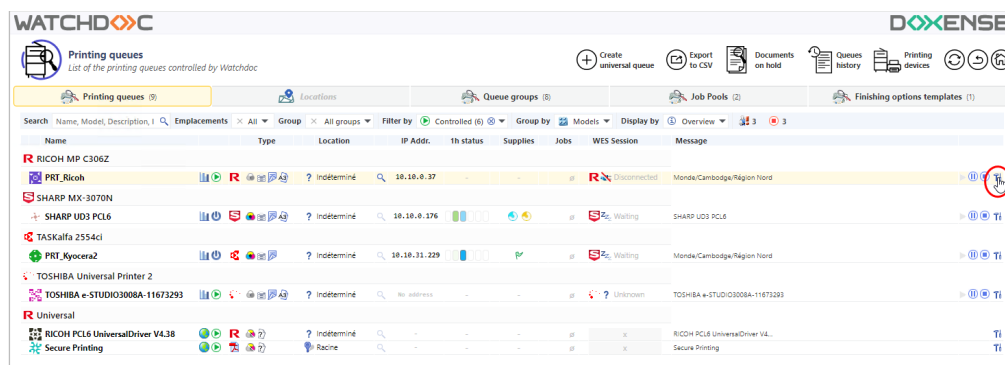
1. From the **Main Menu** of the Watchdoc administration interface, in the **Production** section, click **Print Queues, Queue Groups & Pools**:



2. In the **Printing queues** list, activate the **Controlled** filter, then select the queue you want to install the WES on.
3. For this queue, click the **Edit Queue Properties** button  at the end of the line:



4. For this queue, click the **Edit Queue Properties** button  at the end of the line:



→ You are taken to the **Print Queue Properties** interface in which several sections are displayed:

- the Validation mode is managed in the **General information** section ;
- WES properties are managed in the **WES** section.

Configure the Validation mode

For the WES to work, the queue must be in **Validation** mode :

1. In the **General information** section > **Mode** subsection, if the **Same as group** option is selected, check that the group is in is in **Validation** mode.
2. If the print queue is not in a group, select the **Validation** mode;

Configure the WES onto the queue

In the **WES** section:

- **Activate embedded interface:** tick the box to use a WES.
- **Profile subsection:** From the list, select the WES to configure. The list comprises profiles created ahead of time in your instance of Watchdoc. If the desired profile is not found there, you will need to configure it (refer to WES configuration profile).
- **WES identifier subsection:** Once you have ticked the box and selected the profile, the ID of the WES field will fill itself with “\$AUTOSERIAL\$”. Keep it that way so that the server will determine itself the serial number of the device and use it as the WES ID. You can also input directly the serial number of the device in this field.
- **Diagnosis subsection.** It may be useful to activate WES trace logging, especially to diagnose an anomaly. Use this subsection to specify settings relating to WES trace log files:
 - **Enable logs:** Tick the box if you would like to generate trace log files on communications between Watchdoc and the WES and to keep them on the server.
 - **Log level:** From the list, select the type of requests you wish to trace:
 - **Network trace:** Communications between server and WES.
 - **All requests:** Used to keep a trace of all of the requests (to APIs, to RPCs).

- **Requests to APIs and RPCs:** Used to retain traces of requests to the API and the RPC requests sent,
- **API Requests:** Used to retain traces of the requests sent to the APIs,
- **None:** Not used.
- **File locations:** Use this field to enter the path to the folder where you wish to save the trace files. If no path is specified, then by default, Watchdoc saves the trace files to C:\Program Files\Doxense\Watchdoc\logs.



Although all options are possible, we recommend strongly to opt for the activation of **All Requests** so that as much information as possible can be View of the diagnosis. For the sake of performance, the traces must not Be activated only for analytical and diagnostic purposes.

- **Wes Settings subsection:** Use this section to configure the connection settings between the WES and Watchdoc in cases where the connection is a secure one, so that you can override the device username, password and the type of connection that is configured in the instance just for one queue:
 - **Use the default credentials:** Tick this box to use the identifiers already preset when the WES was configured.
 - **Device Username:** Use this field to enter the device administrator's account,
 - **Device Password:** Use this field to enter the password assigned to the device administrator.
- **Spool transformation:** The Spool transformation function lets Watchdoc impose or propose to users changes to the initial print criteria to better match the print policy implemented:
 - **Activate monochrome conversion:** Tick the box to propose that a print job requested in colour be changed into a one colour document;
 - **Activate a change in the number of copies:** Tick the box to propose that the number of copies of a print job can be changed;
 - **Activate conversion to two-side printing:** Tick this box to propose that a print job requested for one-side printing be printed on two-sides;
 - **Activate conversion to one-side printing:** Tick the box to propose that a print job requested for two-side printing be changed to one-side printing.




Activate the Spool transformation function activates Client Side Rendering mode in the Device section.

- **Dump spool sub-section:** Watchdoc enables spool dumping, especially to analyse the printing activity;

- **Enable spool dumping:** tick the box if you want that the spools may be save and set the tracing conditions;
- **Trace level:** in the list, select the traces that you want to save (none, errors, edited spools and all);
- **Enable for:** in the list, select how long you want to enable spool tracing (an hour, a day, a week or a month).

Validate the configuration

1. Click on  to validate the WES configuration on the print queue.
2. After having configured the WES onto the queue, you must install it.

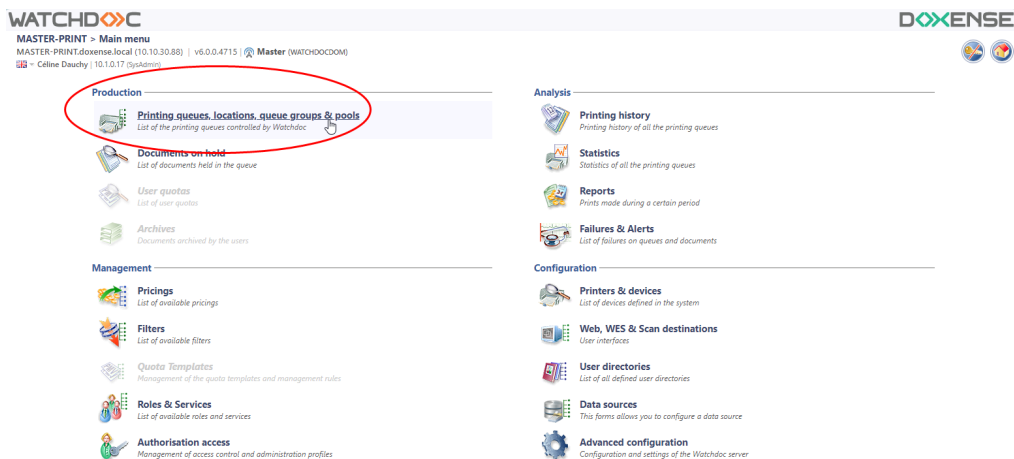


After **modifying** a WES profile already installed on a print queue, it is necessary to restart the queue so that it takes account of the profile modifications. To restart a queue, click on the "pause" and then "start" buttons in the queue list.

Install the Xerox WES onto the queue

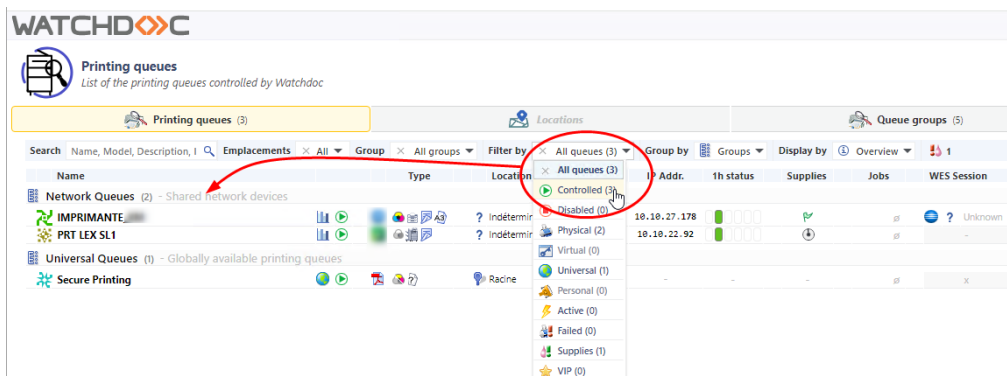
Access the interface

1. From the **Main Menu** of the Watchdoc administration interface, in the **Production** section, click **Print Queues, Queue Groups & Pools**:



→ You will access the print queues interface.

2. In this list, activate the **Controlled** filter:



3. Click on the queue on which you want to install the WES.

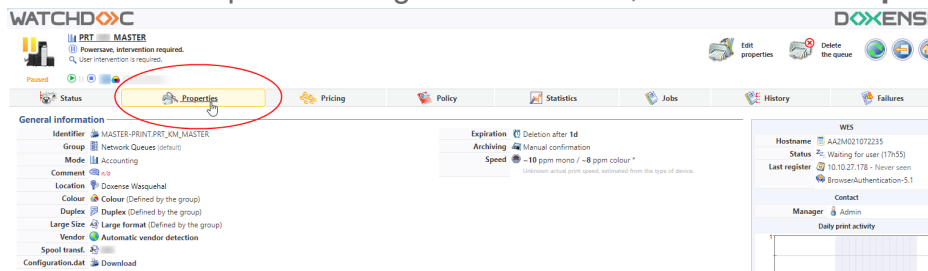
→ You access the **Queue management** interface.

Configure the Validation mode

4. In the queue management interface, click on **Edit properties** button
5. In the **General information** section> **Mode** subsection, select the **Validation** mode;
6. **Save** the queue configuration.

Install the WES

1. Go back to the queue management interface, then click on **Properties** tab:



This section contains several buttons:

- **WES Device:** Displays a summary page for all WES devices configured on this server;
- **Access the device's web interface:** Is a shortcut to the device internal administration web site;
- **Install...:** Enables Watchdoc® to install the embedded interface (WES) on the device. It can take up to 30 seconds;
- **Uninstall :** Enables Watchdoc® to uninstall the embedded interface (WES) on the device;

7. In the , section, click on the button Install to install the application. Watchdoc will first check that the device is compatible, then it will set LDAP directories, create roles, add the Watchdoc web site and change the device security settings. Each step is symbolized by an item (pre-checks, device-login, push-pull-print,push-login-app, security-config) and a green spot. For a successful installation, all spots must be green in the Installation report:

Xerox EIP

